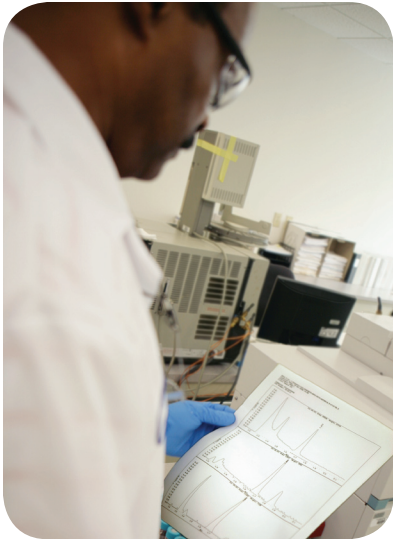


FL ADaPT EDD? Yes, we can!



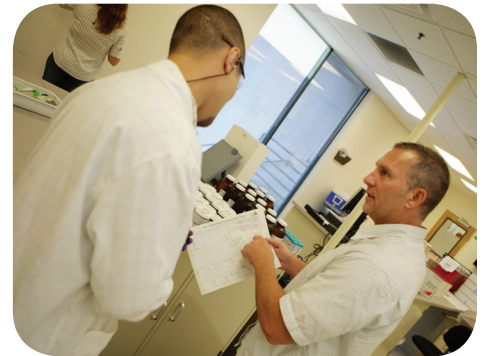
In fact, Columbia Analytical was one of the very first commercial laboratories to offer the FL ADaPT Electronic Data Deliverable (EDD) starting back in 2005, based on the EDD requirements of the South FL Water Management District and the Comprehensive Everglades Restoration Project (CERP).

Columbia Analytical has been recognized by the FDEP as being fully capable of providing the FL ADaPT EDD, and very soon the FDEP intends to post to their website a listing of all of the laboratories that are qualified to provide this EDD.

Columbia Analytical has participated in the training of environmental consultant professionals who have already had the need to provide this EDD to the FDEP for certain projects.

As a user of environmental testing services, it is also important that all parties be keenly aware of their responsibilities and obligations as a part of this program. This program is applicable not only to Solid Waste/Landfill related projects, but also to all of the other programs under FDEP's Bureau of Solid and Hazardous Waste, although implementation of the ADaPT EDD by the petroleum and hazardous waste programs are likely still several months off.

We would look forward to having a conversation with you about this EDD program, and can provide you with answers to the most commonly requested questions.



Contact Information

Steve Packard
386.672.3539
spackard@caslab.com

Jacksonville Lab Project Managers
904.739.2277